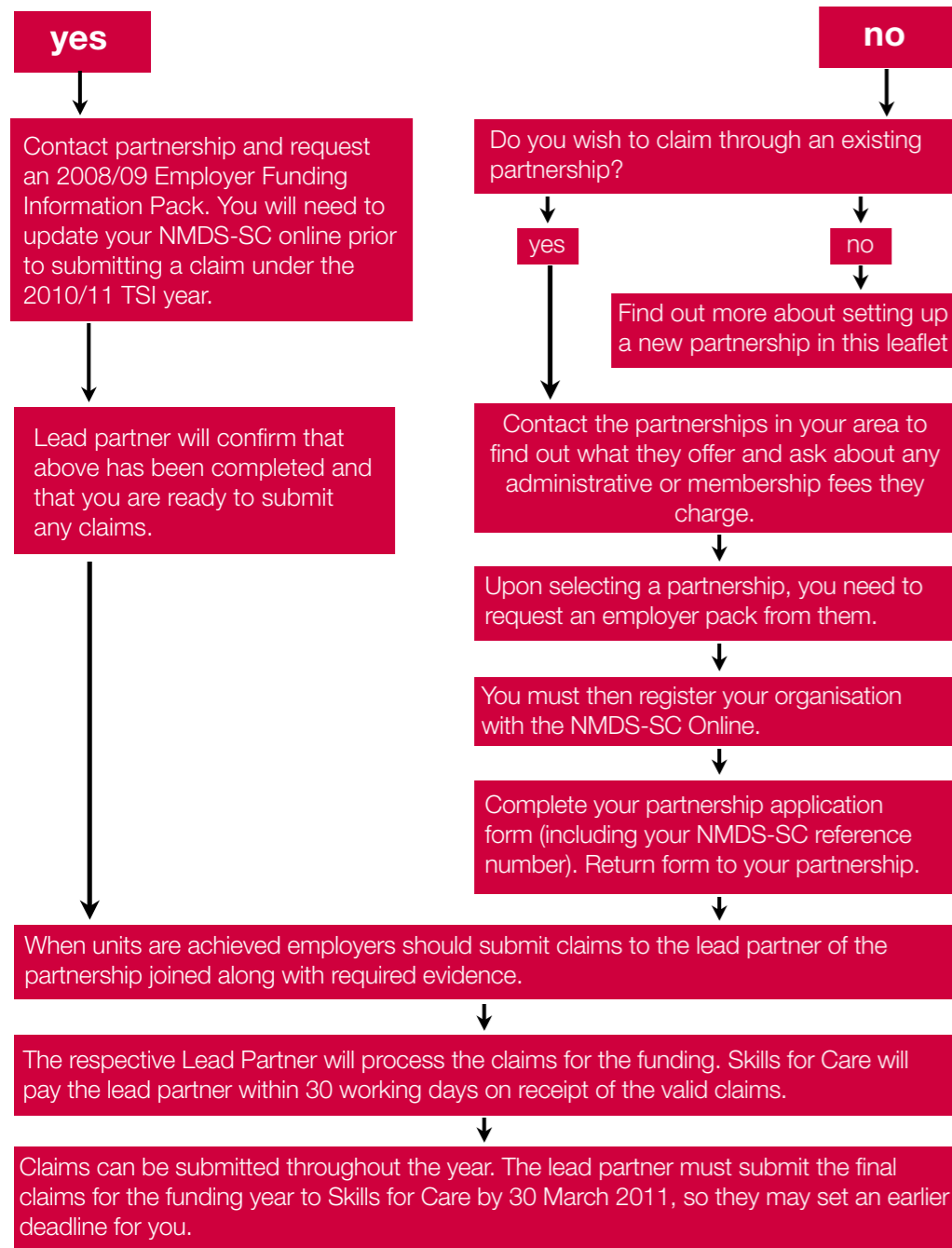


# how to claim TSI funding

Employers must join a Partnership in order to access funding.

Are you currently in a **TSI employer-led partnership**?



“we fund the development of social care staff”

## TSI funding

are you missing out?

Skills for Care  
Albion Court  
5 Albion Place  
Leeds  
LS1 6JL

telephone 0113 245 1716  
fax 0113 243 6417  
email [info@skillsforcare.org.uk](mailto:info@skillsforcare.org.uk)  
web [www.skillsforcare.org.uk](http://www.skillsforcare.org.uk)

© Skills for Care 2010



nm<sup>ds</sup>-sc™  
national minimum  
data set for social care





Training Strategy Implementation funding is available on an annual basis to support employers, micro employers and micro providers (including those who employ their own support staff) with workforce development - building the skills of their employees. The funds are a contribution to the cost of learning and assessment. To claim the funding you must be part of an employer led partnership.

**how much is the funding?**

Skills for Care contributes £80 per NVQ unit or per Induction claimed and £160 per Assessor award. The units need to have been completed and signed off between 1 January 2010 – 17 March 2011. The total amount of funding is limited and so it may not be possible to meet the full amounts requested.

**what is an employer led partnership?**

A number of social care employers (including micro employers and micro providers) or an association of social care employers coming together to ‘pool’ their workforce development needs and to commission training to meet those needs. The funding is managed through contracts with these employer led partnerships.

A member of the group will need to be nominated as lead partner – this person should be a social care employer not an education and training provider. The lead partner will hold and administer the contract on behalf of the group and will make payments, track ‘units achieved’, maintain the partnership and provide NMDS-SC reference numbers, reports and information to Skills for Care.

**how do I form a new employer led partnership?**

To form your own employer led partnership you would need to do the following:

- Identify the employers who will work together in the partnership.
- Decide who will be the lead partner and hold the contract with Skills for Care.
- Collate each partners workforce development plans to identify the needs of the partnership.
- From the overall workforce development plan identify those units for which you will be applying for funding through TSI.
- Agree how you will manage to work together to achieve the contracted outcomes should you be successful in your application.

In the interest of all parties we would expect that an agreement would be put in place between the lead partner and members of the partnership.

**who can apply for TSI funding?**

Any care provider from the voluntary, private and independent sector can apply. Individuals who employ their own care and support staff including recipients of direct payments, individual budgets, self-funders and others are also able to apply.

**do I have to complete the NMDS-SC?**

In order to be eligible for TSI funding you must complete and annually update the National Minimum Data Set for Social Care (NMDS-SC). The NMDS-SC is a web-based system which gathers up-to-date workforce data on the social care sector. For more information visit [www.nmds-sc-online.org.uk](http://www.nmds-sc-online.org.uk).

**can I claim for all employees?**

There are no age or qualification restrictions for employees. They must be working in a care or support related role with a valid National Insurance number. It is the responsibility of the employer to make a TSI funding claim, not the individual employees.

**who is the funding paid to?**

Skills for Care pay the lead partners, who will then pay the money on to the employers within their partnership. The money is paid by cheque or via BACS transfer.

**how quickly will I receive the funding?**

Skills for Care aims to pay lead partners within 30 working days of receiving correctly completed evidence.

**what evidence do I need to support a claim?**

Lead partners will provide employers who are members of their partnership with a claim form for inductions. These must be signed by the inductee and manager once induction is completed. NVQ units can be claimed on unit summary sheets provided by training providers, however these must meet the criteria set by Skills for Care. Alternatively these forms can be found on the Skills for Care website.

For more information contact your local Skills for Care office or access the following websites -

[www.skillsforcare.org.uk](http://www.skillsforcare.org.uk)

[www.nmds-sc-online.org.uk](http://www.nmds-sc-online.org.uk)

<b>North East</b>	<a href="mailto:northeast@skillsforcare.org.uk">northeast@skillsforcare.org.uk</a>	<b>01642 345 681</b>
<b>North West</b>	<a href="mailto:northwest@skillsforcare.org.uk">northwest@skillsforcare.org.uk</a>	<b>01772 459 401</b>
<b>Yorkshire &amp; the Humber</b>	<a href="mailto:yorkshireandhumbermail@skillsforcare.org.uk">yorkshireandhumbermail@skillsforcare.org.uk</a>	<b>01904 461 050</b>
<b>Eastern</b>	<a href="mailto:eastern@skillsforcare.org.uk">eastern@skillsforcare.org.uk</a>	<b>01223 257 923</b>
<b>West Midlands</b>	<a href="mailto:enquirieswm@skillsforcare.org.uk">enquirieswm@skillsforcare.org.uk</a>	<b>0121 250 3800</b>
<b>East Midlands</b>	<a href="mailto:emrc@skillsforcare.org.uk">emrc@skillsforcare.org.uk</a>	<b>01332 345 270</b>
<b>London</b>	<a href="mailto:sfc.london@skillsforcare.org.uk">sfc.london@skillsforcare.org.uk</a>	<b>020 7471 6772</b>
<b>South West</b>	<a href="mailto:belinda.todd@skillsforcare.org.uk">belinda.todd@skillsforcare.org.uk</a>	<b>01305 751 130</b>
<b>South East</b>	<a href="mailto:seregion@skillsforcare.org.uk">seregion@skillsforcare.org.uk</a>	<b>01932 853 500</b>
<b>National</b>	<a href="mailto:maria.markham@skillsforcare.org.uk">maria.markham@skillsforcare.org.uk</a>	<b>0113 245 1716</b>